

NAMHSA

North  
American  
Nationals



1997

*Holiday Inn Lexington North  
Lexington, Kentucky*

*July 23 and 24, 1997*

*Official Show  
Program*

*Laura Perrier*



Dear NAN Attendees,

Welcome to the 1997 North American Nationals! With over 200 exhibitors and 2500 horses showing in 132 classes this year, the NAN has surpassed everyone's expectations. I know you will all enjoy the two days of top-notch competition, surrounded by hobbyists and friends from all over the country.

Many people have worked very hard all year to offer you this spectacular event. If you have a chance, be sure to thank the NAN Committee and Staff, as well as the volunteers who are making sure that we all enjoy the NAN as much as possible.

NAMHSA wishes to thank all of our Member Shows for their participation in the past year. You will find a list of current NAMHSA Member Shows in this program. We urge you to continue to support the Member Shows in your area and encourage new shows to join NAMHSA.

The hobbyists involved with NAMHSA constantly strive to promote the hobby and develop a network for our shows and exhibitors. This has been a busy year for the Board of Directors, with discussions of many key issues and planning for the future. We hope you will join us Wednesday evening for our annual meeting, which is open to the public.

It is our pleasure to present the 1997 North American Nationals and we hope you will enjoy the two days of National Championship competition, as well as your visit to Kentucky and Breyerfest.

Best of Luck to you all,

Michelle Bacon  
1996-97 NAMHSA President

---

# The NAMHSA North American Nationals Model Horse Show

July 23 and 24, 1997  
Lexington, Kentucky

**NAN '97 Chairperson**  
Nancy F. Timm

**NAN '97  
Wednesday Original Finish  
Show Sponsored by  
BREYER,  
Division of Reeves International**

**NAN '97 Registration/Administration**  
Rob Harris Ann Harris  
Kate Cabot Michelle Bacon

**NAN '97 Judges**  
Michelle Bacon Richard Clark  
Kelly Engelsiepen  
Keren Gilfoyle-McGroarty  
Kathy Hartmann Eleanor Harvey  
Elizabeth Jackson Candace Liddy  
Elaine Lindelef Cheryl Monroe  
Laura Pervier Sue Rowe  
Therese Schuler Lisa Sents  
Sue Stewart Sandy Tomezik  
Each judge has been nominated by  
a NAMHSA member showholder

**NAN '97  
Benefit Auction Chairperson**  
Laura Pervier  
**Auction Staff**  
Auctioneer  
Ardith Carlton  
Staff  
Debbie Talbott Karen Gerhardt  
Elaine Boardway Eleanor Harvey  
Katherine Marsh Pauline Entin  
Corky Visminas Tiffany Corwell-Herrlein  
Bonnie Elber Allison Malone  
Ardith Carlton Kelly Engelsiepen

---

**NAN '97 Operations Chief**  
Jane Wagner  
**Operations Staff**

Announcer Darian Buckles	Security Howard Wisell
Photographer John Brent	Karen Bartholomew Dennis Clark
Registration Ann White	Debbie Messner Allison Malone
Rebecca Wagner Kelly Korber	Ribbons Lorrie Franz
Ring Stewards Bonnie Elber	Emily Caruso Lisa Clark
Karen Gerhardt Nancy Tubb	Heather & Steffanie Brent
Judy Caruso Renee Foust	Gopher Shirley Cox
Tiffany Herrlein Pauline Entin	T-Shirts Debbie Moore
Cheryl Mundee On-Deck Board Linda Subias	Daralyn Wallace

**NAN '97 Trophys**  
Coordinator  
Ardith Carlton  
Judging  
Kim Jipson Sarah Minkiewicz  
Sculpture  
Carlee Balling  
Castings  
DaBar Enterprises  
Trophy Head Finishing Crew  
Michelle Bacon Kate Cabot  
Nancy Timm Jen Timm  
Michelle McKenney Carlee Balling  
Plaque Assembly  
Auld Crafters

**NAN '97 Program**  
Karen Gerhardt

**NAMHSA Webmistress**  
Gail Berg

---

**The NAMHSA 1996-97  
Board of Directors**

Michelle Bacon  
*President*

Elaine Lindelef  
*Vice President*

Daphne Macpherson  
*Treasurer*

Karen Gerhardt  
*Secretary*

**Regional Representatives**

*Region 1, Northwest:*

Traci Durrell-Khalife  
*Alaska, Idaho, Montana, North Dakota,  
Oregon, South Dakota, Washington,  
Wyoming*

*Region 2, Southwest:*

Darian Buckles  
*Arizona, California, Colorado, Hawaii,  
Nevada, New Mexico, Utah*

*Region 3, North Central:*

Ardith Carlton  
*Illinois, Indiana, Iowa, Kentucky, Michigan,  
Minnesota, Ohio, Wisconsin*

*Region 4, South Central:*

Daralyn Wallace  
*Arkansas, Kansas, Louisiana, Missouri,  
Nebraska, Oklahoma, Texas, Mexico*

*Region 5, Northeast:*

Michelle McKenney  
*Connecticut, Delaware, Maine,  
Massachusetts, New Hampshire, New Jersey,  
New York, Pennsylvania, Rhode Island,  
Vermont*

*Region 6, Mid-Atlantic/Southeast:*

Eleanor Harvey  
*Alabama, Florida, Georgia, Maryland,  
Mississippi, North Carolina, South Carolina,  
Tennessee, Virginia, West Virginia.*

*Region 7, Canada:*

Cathy Tweeddale  
*All of Canada*

North American Model Horse Shows Association, NAMHSA, North American Nationals, and NAN are trademarks of the North American Model Horse Shows Association

---

**The sculpting artist of the  
NAN 1997-98 Trophy head,  
Carlee Balling**

Carlee Balling is 27 yrs old and lives in New Hampshire and works at the UNH Poultry Farm and is also a graduate of the university's animal science program. She has been involved in the model horse hobby since 1982 when she started showing in a 4-H oriented winter model horse circuit. From there she became involved in showing morgans saddleseat and eventually worked at a standardbred racing stable as a groom. The artist has been customizing Breyers since seventh grade with a production rate of 2 per yr, and after meeting artist Janice Starr 3 yrs ago has been sculpting from scratch.

When it was suggested to Carlee that she submit a sculpture to the NAN trophy competition, the dynamic photo of a rearing Arab came to mind (soon to be a 3-D sculpture) and sketches started from there. But since the sculpture was for the North American Model Horse Shows Association, a North American horse was deemed to be the most appropriate subject matter. After hours of chasing down photos out of an extensive pile of accumulated papers, the proportions and body type of a Spanish American Mustang were arrived at. Photos used included Cerbat Mustangs, Paso Finos, Andalusians and Moroccan Barbs. Care was taken to design a flat and easily stackable trophy head that is best viewed under top lighting.

Carlee's future plans with in the hobby include resin-casting some of her original sculptures in traditional and stablemate sizes. Her third sculpture to be reproduced, an aged Paso Fino stallion in polyurethane should be available for viewing and orders at Breyer Fest this year. Long term goals would include getting a bronze sold in the mid east.

---

## **Exhibitor Information for the 1997 NAN**

### **Location:**

Bluegrass Pavillion, Holiday Inn - Lexington  
North, Lexington, KY

### **CHECK-IN PACKET**

Your check-in packet will include:

- an ID tag for each model entered in that day's show
- a key list explaining which tag is used for each model
- your NAN nametag
- a copy of your personalized schedule listing what classes you have entered
- your NAN show program

Each of your NAN ID tags is preprinted with a unique number to identify your model, plus gender and breed information. No other information may appear or be added to the tag. **DO NOT ADD ANY INFORMATION TO YOUR TAGS.**

Any entry appearing in the judging tables with an altered tag will be disqualified.

Please be sure to attach the proper tag to the proper model. Use the key list provided in your check-in packet to match models and tags.

### **GENERAL INFORMATION**

**RING STEWARD:** Each show table will be managed by a ring steward. The ring steward has authority over his/her ring, and exhibitors are requested to follow his/her directions at all times. The ring steward will call and close classes, ensure that all entries in the ring are registered for the class, direct the beginning of judging, and notify exhibitors when entries may be removed.

**TAGS:** Each entry in the ring **MUST** be identified by its official NAN tag.

Any entry presented without a tag will not be judged. It is the exhibitor's responsibility to ensure that the tag is placed where it can be seen by the judges. **NO INFORMATION MAY BE ADDED TO THE OFFICIAL NAN TAG.**

**CLASS CALLS:** Class calls, whether by the ring steward or the announcer, are offered as a courtesy. It is the exhibitor's sole responsibility to ensure that his/her entries are presented at the judging table before the class is closed. The ring steward will make every effort to ensure that each entrant is notified of class setup and class closure. However, no class will be rejudged nor will any refund be available as a result of unnoticed class calls.

**JUDGING PROCEDURE:** Each National Championship class will be judged by three judges working independently. The judges will not consult with each other during the class.

Each judge will place the class 1st through 10th. Points will be assigned to each placing: 10 points for 1st, 9 for 2nd, and so on. The points for each entry will be totaled. The top ten entries with the highest points will be named as an unranked Top Ten.

From the Top Ten, the entry with the highest total will be named National Champion and the entry with the second highest total will be named Reserve National Champion.

**LARGE CLASSES:** Classes of 40 or more entries will be judged in heats. During a heat, each of the three judges will select 10 unranked entries.

Any entry appearing on two or more judges, cards will receive a Finalist ribbon and will advance to the final class judging. The same team of judges will judge all heats and the finals of a class. Performance class setups judged in heats will not be removed for final judging. If a class you have entered is to be judged in heats, your entry's assigned heat will be noted in your check-in packet.

**JUDGES:** The North American Nationals is pleased to welcome a distinguished panel of judges. Each judge on the panel was recommended by a NAMHSA member show as qualified to judge at the NAN.

Judges will be assigned to classes based on their expertise in a particular area as well as the need to avoid conflicts of interest. No artist will judge his/her own work in any class. Due to possible changes in individual judges plans, the NAN reserves the right to substitute another judge from the panel for any judge unable to officiate.

**REMOVAL OF ENTRIES:** If an entry is not removed from the ring in a timely manner at the ring steward's request, permission is assumed for NAN personnel to remove the entry and any setup to a holding area. Reasonable care will be observed, but neither NAN nor any individual shall be responsible for any damage.

**EXHIBITORS' AREA:** The Exhibitors' area will be under the authority of the Barn Manager. Exhibitors are requested to follow the Barn Manager's direction on displaying or packing models and materials.

**ONLY EXHIBITORS** will be admitted to the exhibitors' table area. You must wear your NAN name tag in order to enter the area. This is necessary due to large number of participants. Controlling access to the exhibitors' area offers increased security for your models and reduces unnecessary traffic between tables.

Every exhibitor will have an assigned table space. Because there are so many competitors and we have to fit everyone as comfortably as possible, some people who requested to sit together may be seated in the same vicinity, but not the same table. We tried to accommodate all requests; however, when space does not allow, we attempted to keep friends as neighbors if not actual table part-

ners.

Due to very limited space, performance exhibitors should plan to repack tack and props, as well as performance-only models, as soon as the performance classes are completed for the day. Please keep all boxes stored neatly under your table. Do not block the areas between tables, as this will cause traffic congestion as well as potential damage to the items left out in the aisles. If you are staying at the Holiday Inn, you may want to leave the horses not showing in a particular division (like halter and/or performance) in your room until needed. Those who came by car may wish to leave same in their vehicles until the appropriate time.

**TABLE SALES:** Although there is no prohibition on selling from your table, please be aware that only exhibitors will be admitted to the area.

The Barn Manager may request that sales horses be removed from the table if there is a space problem. Exhibitors are encouraged to take advantage of the many other opportunities for selling at BreyerFest activities and to concentrate on enjoying the North American Nationals as a show!

### **PERFORMANCE CLASSES**

**SETUP TIME:** Setup time will be STRICTLY enforced. Exhibitors are strongly encouraged to have each entry completely tacked for its first performance class well beforehand.

The actual setup time will vary according to the complexity of the class. Exhibitors with complex setups should plan ahead to minimize trips from the exhibitors, area to the show table.

To ensure equity, every exhibitor will have the same setup time limit, regardless of complexity of the setup or the number of trips required OR number of entries an exhibitor enters.

**SETUP REQUIREMENTS:** The requirements below are necessary to facilitate judging and allow each exhibitor an equitable chance to display his/her entry.

**Size:** Dioramas, sandbox-type footing, or any other platform or tray setup used in performance should be no larger than 18" X 20".

**No ring setups in pleasure:** No background fences, footing, decorative accessories, platform or tray type setup will be allowed in the huntseat pleasure or western pleasure classes.

**Explanatory materials:** Reference materials, diagrams, photos, or other background information for the judges should be prepared in advance and be typed if possible. Accompanying material may be one side only. Please limit this accompanying material to as small a space as possible.

The explanatory materials may NOT include the name of the horse, the owner, the stable name, the artist, or any other identifying information. If the ring steward sees illegal information before

the judging begins, he or she will remove the materials; the entry may remain in the class, but without the explanation. If a judge sees the illegal information, he or she will notify the ring steward, who will notify the other judges that the entry is not to be considered in the class.

Unacceptable explanation: "Lovely Lady stands quietly..."

Acceptable explanation: "The mare stands quietly..."

If in doubt, show your material to the ring steward during setup.

**PLEASE BE PREPARED:** You may make tack adjustments to tack and accessories at the judging tables, but you must not make tack changes (remove or put on saddle, bridle, boots, tie-down, or other tack accessories) at the judging tables. If you do this, you will be asked to remove your horse.

**Multiple horse setups:** Only one model may be designated as an entry per setup. Please remove the tag from any model used as a prop (examples: multi-horse hitch, team roping, etc.)

### **HALTER CLASSES**

**MULTIPLE TABLES:** Halter classes will run at several tables simultaneously. The next class on the schedule will be called as soon as any ring table is available. Multiple classes may be called at the same time. Watch the ring stewards and have your entries ready and organized.

**NO SETUPS:** No background setups (fencing, flower pots, other decorative accessories) or footing of any kind will be allowed in halter classes, EXCEPT as noted below.

**CHINA/RESIN PROTECTION:** China/Resin models may be placed on a piece of cloth, felt, foam, etc., to protect the model at the judging table. The cloth should be of the minimum appropriate size to protect the model; the ring steward may direct that excessively large padding be folded or otherwise resized. China/Resin models may be presented either standing or laid upon the padding; if you choose to lay the model down on the table, you give implicit permission for the judges to touch the model, stand it up for judging, then replace it on the padding. All judges will use reasonable care, but showing breakable models remains at the exhibitor's sole risk.

**HALTERS:** Added halters or bridles are discouraged, but not prohibited. Remember that a halter or bridle will not be considered an asset in judging; however, incorrect or improperly fitted equipment may count against your entry. If leadshanks must be included, it is recommended that they be placed in such a way to minimize obstructing the judges, view of the model. There will be no disqualification for leadshank placement.

**ENTER THE RIGHT CLASS:** To accommodate varied

entry numbers, breed classes are organized differently in each halter division. For example, an "Anglo-Arab" may show in the Arabians/Half-Arabs/Part Arabs class in the OF Plastic Division and in the Sport Horse class in the Custom Division. Please keep this in mind and be sure to present your entry for the correct class based on your personalized entry schedule. An entry not registered for the class in the computer when that class is held will not be eligible for awards in that class.

**CLASS ARRANGEMENT:** The ring steward will attempt to ensure equal visibility for every model in the class. Please follow the steward's direction if you are requested to move your entry or face it in a different direction. If you do not respond to the steward's request, he or she may move your model or remove it from the class at his/her discretion.

**EXPLANATORY MATERIALS:** If your horse is an unusual breed or type, you may include an information card. Breeds which include more than one type (for instance: Appaloosa/Appaloosa Sport Horse, Riding type Norwegian Fjord/Draft type Fjord, and Welsh Sections A, B, C, and D) will all be judged together. The additional information you give the judges may help them better evaluate your entry.

As in the Performance Division, these explanatory materials may NOT include the horse's name, the owner, the stable name, the artist, or any other identifying information. If the ring steward sees the illegal information before the judging begins, he or she will remove the materials; the entry will remain in the class, but without the explanation. If a judge sees the illegal information, he or she will notify the ring steward, who will notify the other judges that the entry is not to be considered in the class.

#### **AWARDS**

Each horse selected as a TOP TEN in a National Championship class will receive a NAMHSA TOP TEN Rosette with 18-inch streamers.

Each horse selected as a NATIONAL CHAMPION or RESERVE NATIONAL CHAMPION will receive a trophy plaque featuring a resin horse head sculpted by Carlee Balling exclusively for NAN 97 and NAN 98.

## **North American Nationals 1997 Entrants**

Amick, Kathy  
Lakeland FL

Anderson, Donna  
Mundelein IL

Andrews, Betsy  
Edgewater MD

Annee, Stephanie  
Canton GA

Arns, Jackie  
Ithaca NY 14850

Arnold, Jo Ellen  
Springfield VA

Arsuaga, Jenny  
Virginia Beach VA

Bailey, Julie  
Demotte IN

Ball, Sherry  
Shaw AFB SC

Balling, Carlee  
Durham NH

Bashaw, Nicole  
Glen Rock NJ

Bateman, Kathy  
Champaign IL

Beason, Jenna  
Homer IL

Behning, Laura  
Covington GA

Bendel Gaertner,  
Sandi  
Austin TX

Benisch, Rebecca  
Franklin TX

Bensema-Young  
Susan  
State College PA

Bilon, Ann  
Dublin OH

Bjorgo, Kim  
Big Pine Key FL

Boardway, Elaine  
Jordan NY

Boehm, Jessica  
Mahwah NJ

Bonanni, Lisa  
Ft. Washington PA

Brent, Heather  
Londonderry NH

Briscoe, Robin  
Dracut MA

Brockmoeller, Silke  
Toledo OH

Cabot, Kate  
Byfield MA

Camper, Adele  
Columbus OH

Carlson Deb  
Oakdale MN

Carlton, Ardith  
Columbus OH

Chipkewich,  
Catherine  
Redford MI

Chismudy, Joan  
Demotte IN

Cline, Jennifer  
Glendale OR

Clark, Robin  
Battle Creek MI

Cox, Caroline  
Gastonia NC

Craig, Chris  
Winchester KY

Daly, Meighan  
Woodstock GA

David, Kim  
Lake Charles LA

Day, Marjorie  
Anthony FL

Deale, Dawn  
Richmond VA

Dean, Linda  
Union ME

DeCuir, Jeannine  
Bagdad FL

Denzel, Liana  
Sandy Hook CT

DiAnnibella, Barbara  
Gap PA

Dickinson, Beth  
Annville PA

Diekman, Angie  
Byron Center MI

Dilks, Cindy  
Davie FL

Donnelly, Lisa  
Louis MO 63141

Dorrance, Deanne  
Corunna MI

Ehlers, Julie  
Atlantic IA

Entin, Pauline  
Ithaca NY

Evans, Candace  
Provencal LA

Farley, Sharon  
Longview TX

Ferro, Tina

Foote, Chris  
South Laneville TX

Frank, D'Arry Jone  
Modesto IL

Garcia, Lynn  
San Antonio TX

Garwood, Rochelle  
Charlottesville VA

Gehrmann, Kerri  
Geneva IL

Gerhard, Carol  
Blandon PA

Gottlieb, Chris  
Norristown PA

Gottlieb, Jennifer  
Norristown PA

Grant, Jeanne  
Traverse City MI

Grant, Judy  
Ocala FL

Hatch, Alicia  
LaPorte TX

Harris, Julie  
Tampa FL

Hecker, Paula  
Tallahassee FL

Henderson, Kim  
Raleigh NC

Henne, Nina  
Bernville PA

Henry, Amy  
Pittsburgh PA

Hicks, Brona  
Hurdle Mills NC

Hill, Greta  
Orangevale CA

Hinkle, Mel  
San Angelo TX

Hoffert, Beth  
Shillington PA

Hosta, Rebecca RHO  
Seven Hills OH

Householder, Sondra  
Chattanooga TN

Hunter, Nickie  
Kansas City MO

Hyman, Ainsley  
Lynbrook NY

Irwin, Michelle  
Vinemont AL

Isenbarger, Lynn  
Urbana IL

Jacobs, Dorothy  
Collins NY

Jensen Jody Lynn  
Wallington NJ

Jones, Jill  
Trafalgar IN

Kelly, Bailey  
Elizabeth CO

Ketchuck, Janice  
Endicott NY

Ketchuck, Shirley  
Endicott NY

King, Cindy  
Indianapolis IN

Kistler, Jennifer  
Rosburg WA

Knoth, Diane  
Manassas VA

Krafick-Montgomery,  
Diana  
Apollo PA

Kuchar, Dawn  
Southfield MI

Kusluch, Lucy  
Pittsburgh PA 15237-

Landis, Melissa  
Harleysville PA

Larkins, Heather  
Pontiac MI 48340

Levecque, Sarah  
Littleton MA

Little, Kay  
Williamsburg VA

Lineman, Mary  
Mentor OH

Lynskey, Libby  
West St Paul MN

MacDonald, Meg  
Holly MI

Macpherson,  
Daphne R.  
Edmonds WA

Manderfeld, Bev  
Hastings MN

Mangelsdorf, Paris  
Franklin Lakes NJ

Marsh, Katherine  
Littleton CO 80123

Mays, Heather  
Sparks NV

McCurdy, Heather  
Chicago IL

McKenney, Michelle  
Rochester NH

Meador, Melissa  
West Dowagiac MI

Metcalfe, Brenda  
Dubuque IL

Michael, Ann  
Pittsburgh PA

Moore, Debbie  
Plainfield IN

Morden-Moore,  
Andrea  
Champaign IL

Morehouse, Ann &  
Jane  
San Leandro CA

Morrison, Carrie  
Columbus OH

Munkwitz, Erica  
Harleysville PA

Nelson, Cary  
Conway MA

Ness, Barb  
Kalamazoo MI

Nogrady, Debbie  
Chauncey OH

Norris, Kay  
Honoraville AL

O'Connor, Kelly  
Arlington MA

Owen, Grace  
Birmingham AL

Partee, Christie  
Dallas TX

Peterson, Jaclyn  
Altamonte Springs  
FL

Peyre-Ferry, Marcella  
Oxford PA

Phelps, Leslie  
Ithaca NY

Phillips, Morgan  
Indianapolis IN

Pieger, Ruth  
Barberton OH

Pinkham, Lindy  
Camden ME

Plourde, Danielle  
Dryden NY

Pook, Jeanette  
Hackensack NJ

Rapplevea, Beth  
Bedford NY

Rivera, Lisa  
Durand MI

Rizzo, Rebecca  
York PA

Robb, Bonnie  
Altadena CA

Robertson, Colette  
San Antonio TX

Sapp, Carrie  
Pflugerville TX

Schneider, Kelly  
Plainfield IN

Seehaver, Cheryl  
Franklin WI

Seitz, Cindy  
Hurst TX

Smalling, Michelle  
Tuscola IL

Smith, Anthea  
Quincy FL  
Stanley, Alice  
Woodford VA  
Steinert, Laurel  
Hartland WI  
Stoddard, Anita  
Bloomfield Hills MI  
Stoddard, Miranda  
Bloomfield Hills MI  
Stoddard, William  
Bloomfield Hills MI  
Strauss, Liz  
Oakland CA  
Strang, Lisa  
Boyertown PA  
Strayer-Mangan,  
Alicia  
Grand Rapids MI  
Strong, Emily  
Cedar Park TX  
Sturhann, Linda  
Mount Upton NY  
Sulser, Elaine  
Loganville GA  
Swanger-Grove, Kim  
Centre Hall PA

Thomas, Lois  
Midland MI  
Thompson, Margaret  
San Jose CA  
Timm, Jennifer  
Holden MA  
Tirk, Karyl-Lynne  
San Angelo TX  
Tomlinson, Kathy  
Maybee MI  
Tubb, Nancy  
Piscataway NJ

Velazquez, Hillary  
Circle Reno NV  
Visminas, Corky  
Columbus OH  
Von Mayr, Lynne  
Princeton TX

Waldo, Gretchen  
Tallahassee FL  
Wallace, Daralyn  
Bryan TX

Wallace, Morgan  
Bryan TX  
Weitzel, Richard  
Powder Spring GA  
Wells, Kathy  
Eden NY  
Wettingfeld, Liz  
Ocala FL  
Whitley, Patricia  
Kemp TX  
Wiggins, Kathy  
Zebulon GA  
Williams, Michelle  
Peck  
Lexington KY  
Wilgus, Becky  
Bellefontaine OH  
Wisell, Howard  
Sharon CT 06069  
Wood, Neila  
Trevett ME

York, Linda  
St. Cloud FL  
Younack, Debbie  
Somerville NJ

## North American Nationals 1997 Classlist

*The first column contains the number of horses  
entered in the class.*

*The second column is the class number.*

*The third column is the class name.*

### Wednesday

#### OF Performance

26 101 OF Harness  
20 102 OF Huntseat Pleasure (Sport Type)  
25 103 OF Huntseat Pleasure (Other Type)  
19 104 OF Hunter Over Fences  
23 105 OF Jumper/X-C Over Fences  
27 106 OF Dressage/Other English  
16 107 OF Saddleseat/Gaited  
37 108 OF Arena Trail  
26 109 OF Natural Trail  
21 110 OF Games  
50 111 OF Western Pleasure [2 heats]  
22 112 OF Stockwork  
22 113 OF Other Western  
34 114 OF Native/Historical Costume  
19 115 OF Other Costume/Showmanship

#### OF Plastic Halter

35 301 OFP Arabian  
20 302 OFP Part Arab  
29 303 OFP Spanish  
35 304 OFP ASB  
24 305 OFP Morgan  
24 306 OFP TWH/Other Amer Gaited  
25 307 OFP Other Light/Gaited  
29 308 OFP TB  
34 309 OFP Euro WB  
16 310 OFP Sport Harness/Coaching  
17 311 OFP Other Sport  
22 312 OFP QH (Stallion/Gelding)  
37 313 OFP QH (Mare)  
24 314 OFP Appaloosa (Stallion)  
30 315 OFP Appaloosa (Gelding/Mare)  
25 316 OFP Mustang (Stallion)  
24 317 OFP Mustang (Gelding/Mare)  
36 318 OFP Paint  
21 319 OFP Other Stock  
28 320 OFP Clydesdale/Shire

---

18 321 OFP Percheron/Part Percheron  
22 322 OFP Other Draft  
38 323 OFP British Pony  
17 324 OFP Stock Pony  
23 325 OFP Other Pony  
17 326 OFP Longear/Exotic  
37 327 OFP Light/Gaited Foal  
34 328 OFP Other Type Foal

#### **OF China/Resin Halter**

38 401 OFC Arabian  
16 402 OFC Spanish  
16 403 OFC American Gaited  
20 404 OFC Morgan  
23 405 OFC Other Light/Gaited  
26 406 OFC TB  
35 407 OFC Other Sport/Coaching  
28 408 OFC QH  
19 409 OFC App/Paint  
19 410 OFC Other Stock  
36 411 OFC Clydesdale/Shire  
23 412 OFC Percheron  
16 413 OFC Other Draft  
19 414 OFC Welsh  
21 415 OFC Other British Pony  
24 416 OFC Other Pony  
26 417 OFC Longear/Exotic  
23 418 OFC Light/Gaited Foal  
22 419 OFC Stock Foal  
26 420 OFC Sport/Draft Foal  
18 421 OFC Other Type Foal

#### **Thursday**

##### **CM Performance**

32 201 CM Light/Fine/Pleasure Harness  
19 202 CM Draft/Work/Performance Harness  
36 203 CM Huntseat Pleasure (Sport Type)  
26 204 CM Huntseat Pleasure (Stock Type)  
20 205 CM Huntseat Pleasure (Other Type)  
28 206 CM Hunter Over Fences  
25 207 CM Show Jumping  
18 208 CM Other Over Fences  
49 209 CM Dressage [2 heats]  
30 210 CM Other English  
26 211 CM High Action Saddleseat  
22 212 CM Low Action Saddleseat  
30 213 CM English/Other Arena Trail

---

61 214 CM Western Arena Trail [2 heats]  
33 215 CM Natural Trail  
36 216 CM Speed Games  
32 217 CM Novelty Games  
74 218 CM Western Pleasure (Stock Type)  
[3 heats]  
31 219 CM Western Pleasure (Other Type)  
35 220 CM Cutting  
17 221 CM Roping  
17 222 CM Other Stockwork/Rodeo  
25 223 CM Reining  
26 224 CM Western Riding  
21 225 CM Other Western  
34 226 CM Arabian Costume  
24 227 CM Indian Costume  
30 228 CM Other Native/Historical Costume  
5 229 CM Parade  
22 230 CM Other Costume/Showmanship

##### **CM Halter**

48 501 CM Arabian (Stallion/Gelding)  
40 502 CM Arabian (Mare)  
40 503 CM Part Arab  
24 504 CM Andalusian  
21 505 CM Other Spanish  
37 506 CM ASB  
35 507 CM TWH/American Gaited  
36 508 CM Morgan (Stallion)  
15 509 CM Morgan (Gelding/Mare)  
21 510 CM Other Light/Gaited  
43 511 CM TB  
42 512 CM Euro WB  
34 513 CM Sport Harness/Coaching  
33 514 CM Other Sport  
22 515 CM QH (Stallion)  
25 516 CM QH (Mare)  
29 517 CM QH (Gelding)  
20 518 CM Appaloosa (Stallion)  
25 519 CM Appaloosa (Mare)  
19 520 CM Appaloosa (Gelding)  
23 521 CM Paint (Stallion)  
33 522 CM Paint (Mare)  
16 523 CM Paint (Gelding)  
25 524 CM Mustang/Other Stock  
29 525 CM Clydesdale  
19 526 CM Shire/Grade British  
40 527 CM Other Draft

---

26 528 CM Welsh Pony  
19 529 CM Other British Pony  
20 530 CM Show/Gaited Pony  
44 531 CM Other Purebred Pony  
20 532 CM Mixed Pony  
34 533 CM Mule  
14 534 CM Donkey/Exotic  
35 535 CM Light/Gaited Foal  
37 536 CM Stock Foal  
15 537 CM Sport/Draft Foal  
23 538 CM Other Type Foal



NAN '95, judges Tom Bainbridge and Ardith Carlton.  
Photo courtesy of Nancy Timm.



NAN '96, overview of entrants and show rings.  
Photo courtesy of Sheryl Leisure.

---

## NAMHSA 1997 Annual Meeting Wednesday, July 23

This meeting is open to the public, and *everyone* is welcome and encouraged to attend, especially NAMHSA Member Showholders (the voting members of NAMHSA).

**Time:**

Wednesday evening, approximately one hour after the end of the NAN classes.

**Location:**

The Bluegrass Pavilion, Holiday Inn Lexington North, Lexington, KY (same location as the NAN show).

### Meeting Agenda

1. Recognition of Current Board of Directors and Staff
2. Official Announcement of NAMHSA Bylaws Ratification
3. Show Recognition Program
4. Hobby Contact List and Hobby Info Flyer
5. Announcement of NAMHSA Public Relations Position Opening
6. Announcement of Appointment of new NAMHSA Quarterly Editor
7. New NAN Computer System
8. New Qualification Tracking System: Proposals
  - a) Ticket System Presentation
  - b) Exhibitor Tracking System Presentation
9. Introduction of 1997-98 Board of Directors
10. Any other business

## NAMHSA 1996 Member Live Shows

*(These are 1996 shows that have not yet renewed. Membership will expire in 1997 on the date of 1996 show unless renewed.)*

St Croix Valley Live  
Susan Blank  
888 Chippewa  
Hudson, WI 54016

MJW Memorial Congress  
Wendy Galbreath  
4142 Eagles Roost Dr.  
Indianapolis, IN 46234

Reeve-Irvine Benefit Horse Show  
Kim Henderson  
209 Trails End Ct.  
Raleigh, NC 27614

Thunderbird International  
Cathy Tweeddale  
4802 Canada Way  
Burnaby, BC V3A 1Y3 CANADA

Chapel Hill Fall Classic  
Rhapsody Rhodes  
Rt 1, Box WR14  
Pinnacle, NC 27043

Kaatskill Autumn Classic  
Linda Sturhann  
RR 1, Box B7  
Mount Upton, NY 13809

Tampa Bay Classic  
Julie Harris  
4218 Interlake Dr.  
Tampa, FL 33624

Central Model Equine Congress  
Ardith Carlton  
PO Box 18083  
Columbus, OH 43218-8083

Colorado Fall Classic  
Terri Daniel  
12440 N Piney Lake Rd.  
Parker, CO 80134

Dream Performance Show  
Carlee Balling  
36 Colovos Rd  
Durham NH 03824

Phoenix Model Horse Circuit Live  
Susan Candelaria  
6201 N 16th St., #210  
Phoenix, AZ 85016

Central Indiana Equine Expo  
Cindy King  
1018 W edgewood Ave  
Indianapolis, IN 46217

Upper Midwest Regionals  
Libby Lynskey  
976 S. Robert St, #20  
West St. Paul, MN 55118

Halter Madness '96  
Wendy Galbreath  
4142 Eagles Roost Dr.  
Indianapolis, IN 46234

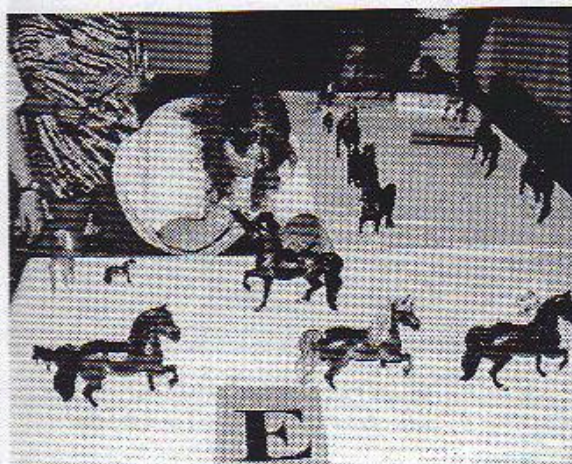
North Dakota Model Equine Extravaganza  
Carla Anderson  
1032 1st Street  
Devils Lake, ND 58301

Siouxland Live  
Thea Ryan  
1213 S Jefferson Ave.  
Sioux Falls, SD 57105

North Star Fall Classic  
Libby Lynskey  
976 S. Robert St, #20  
West St. Paul, MN 55118

EDBD Minis Show  
Nancy Timm  
965-6 Main St.  
Holden, MA 01520

Lone Star Live  
Sue Stewart  
P.O. Box 50508  
Denton, TX 76206



NAN '96, set up of the CM Morgans class.  
Photo courtesy of Sheryl Leisure.

## 1997-1998 NAMHSA Member Shows

(As of July 11, 1997.)

Member shows featured here with photos and/or a write-up are from submissions sent in by that show's contact person. All shows were encouraged to send in information on their show; these are the ones that did respond.

### 1997 Shows Already Held

Let's Do That Again Live  
Therese Schuler  
8218 Club Meadow  
Converse, TX 78109

#### South Coast Classic

Darian Buckles  
2715 Vancouver Ave.  
Ventura, CA 93003



The crew of the first SCC in 1990: Back: Bonnie Robb, David Wernitz, Elaine Lindelef, Sarah Minkiewicz, Kathleen Rose, Joan Berkwitz. Front: Laurie Jensen and Darian Buckles

"SCC" is Southern California's longest-running live show. It has been held in early spring by Darian Buckles and Bonnie Robb since 1990. In 1998, it will be held in Arcadia, CA, on February 8-9.

This is locally favorite show that has grown incredibly in the last few years. It has moved around from Los Angeles to San Clemente to Ventura. Now SCC has found a permanent home at the lovely Los Angeles County Arboretum, in a spacious hall surrounded by beautiful landscaping and friendly peacocks!



SCC 1996 pre-show party... Top row: Mike Lazzaro, Greg Foley, David Wernitz, Bonnie Robb, Dave Barkovitz, Robby Robb, Karim Elaagouby. Couch: Elaine Lindelef, Sonja Johnson, Darian Buckles, Laurie Jensen, Kim Jipson.

Entrants have come from the Southwest and Pacific Northwest to enjoy our springtime weather and great competition.

The Los Angeles Arboretum is across the street from historic Santa Anita Racetrack, and we have organized morning tours of the grounds and workouts. The grounds of the Arboretum itself are the old pastures for the racehorses of Lucky Baldwin, the original founder of Santa Anita.

SCC 1998 will offer as usual, a full performance classlist, and halter divisions for customized, artist resin, OF plastic and china/factory resin. We'll also offer a Novice plastic and novice custom division

EQxpo Model Horse Show  
Karen Geratano  
114 West Hills Rd.  
Huntington Station, NY 11746

#### Sunshine State Live Show

Paula Hecker  
2053 Dyrehaven Dr.  
Tallahassee, FL 32311

The Sunshine State Live Show, Hosted by Paula and Dave Hecker.

Originally called the Florida Model Horse Club Live, SSLS was held in South Florida from 1986-1989 by Lee Francis. In 1989 Lee moved north and Paula Hecker took over the Florida Model Horse Club. The show was moved to Tallahassee, Florida, and renamed The Sunshine State Live Show. SSLS has continued to grow every year (SSLS '97 had nearly 50 entrants), and has been a NAMHSA member since 1995. (continued on page 27)

# The West Coast Model Horse Collector's Jamboree Model Horse Shows and Events

The most exciting model horse collector's event on the West Coast every Summer is The Jamboree. Hundreds of collectors from all over the country gather to buy, sell and learn more about model horses. All of the activities are held at Fairplex and at Sheraton Suites Hotel in Pomona California. The Jamboree is scheduled for August 20-23, 1997, and the weekend starts off on Wednesday evening with an Open House Party at the Jamboree Suite. Everyone gathers to enjoy snacks and punch and get a chance to meet other collectors.



Eager bargain hunters are out looking through the rooms for model horses for sale. On Thursday, the group of Hagen-Renaker enthusiasts will take a trip to the Hagen-Renaker factory, only 8 minutes away from the Hotel, to see how these ceramics are created. In the afternoon, a Seminar "Through the Judge's Eyes", will be given in the Jamboree Suite by Sheryl Leisure and Heather Wells. This is an opportunity for model horse showers to get an insight on how model horses are compared with each other and what makes a champion. At 5:30, the buses will arrive to take participants to the "Medieval Times Dinner & Tournament". This trip was a huge hit in 1995 so we're doing it again! Good food, splendid entertainment and beautiful horses, a natural!

On Friday and Saturday at Fairplex Building 5, the hall will be open from 9-5 and will be filled with vendors selling old and new horse models and everything a horse lover could wish for. Two model horse shows will take place as well. The Jamboree Summer Challenge (JSC) is a NAMSHA member show with over 100 Halter classes, Collectors Classes, and for the first time, a NAN qualifying Performance division. Included in this show will be the Original Sculpture Stakes Class where competitors who have entered can win cash awards for highest placings. The JSC will be held from 9-5 Friday and from 9-12 Saturday. On Saturday afternoon, the Novice Show will be held for first time and inexperienced showers. Registration for the JSC is required in advance, but Novice Show competitors may enter their model in the morning on Saturday.

Other activities for the week-end include the Jamboree Benefit Auction and Kids Only Auction at 7:00 Friday evening, free door prizes, and a Raffle to benefit the Hooved Animal Humane Society each day. There will be three seminars held each day. Topics include "Repositioning Breyers" with Laurie Jensen, "Creation of the Ceramic Horse" with Joan Berkwitz of The Pour Horse, "How to work with Resin Models" with Kim Jipson of DaBar, "Etching Techniques for the Model Horse" with

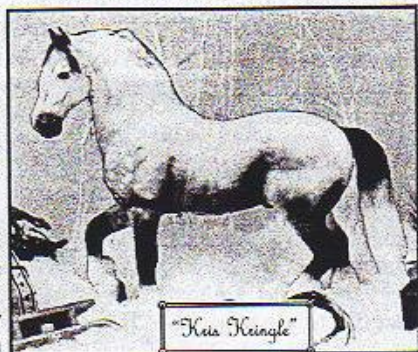


Debbie Buckler of Models by Deb, "Equine Anatomy and Expression" with Kristina Lucas of The Pour Horse and a Model Tack Seminar to be announced. In the Afternoon on Saturday, Stephanie Macejko for Breyer will give a short talk and hold a question and answer period to kick off the "Breyer Tour Stop". Special Run "Sirocco" Indian Ponies will be available for purchase and she will sign them for you.

The theme for the 1997 show is Christmas in August. On Saturday evening, the "Jingle Bell Jamboree Ball" will be held in the Carousel Ballroom of the Sheraton Suites Hotel. This is the final event of the week-end, and tickets include Christmas Dinner, entertainment and the lovely exclusive Breyer model "Kris Kringle". Collectors won't want to miss out on all of the fun, holiday theme activities planned for August 20-23, in Sunny Southern California.

The Jamboree also hosts a series of Benefit Model Horse Shows throughout the year. The Jamboree Benefit shows are all NAMSHA member shows, held on one day with both Halter and Performance classes. Shows are scheduled for November, March, and June each year and all proceeds benefit The Jamboree.

Produced by Sheryl Leisure and Heather Wells, these shows also feature a yummy lunch cooked up by the judges themselves!!



The Jamboree is the site for the North American Nationals every other year. In 1996, the first

West Coast NAN was held and it will be back in 1998. It was a great experience for all participants, and everyone enjoyed meeting and competing with model showers from all over the nation. Make your plans to qualify your models at a NAMSHA member show and join us next year to take in all of the many activities at The Jamboree!

For more information on the Jamboree, send a LSASE and request the Jamboree Bulletin. It contains the schedule of events, information and registration forms. For information on JSC, the Novice Show, Seminars, Trips and Benefit Show Series throughout the year, send a LSASE for each packet to:

Jamboree

1000 W. Fourth St. #154

Ontario, CA 91762

or call 909-981-8096

Mon - Fri, 9-5, California time.





*Left: Julie Harris and Kim Bjorgo, SSLS '96 entrants (and incidentally, showholders for the NAMHSA Member show, Tampa Bay Classic!*

*Below: SSLS '97 winners Deb Kerr and Linda Walter, with their OF China Resin Grand Champion and Reserve.*



SSLS is currently a one-day show and offers 3 halter divisions—OF China/Resin, OF Plastic, and Customized. We also offer Open and Novice performance divisions. Within the halter divisions we usually offer halter classes for Novices and Amateur owners in breed type and craftsmanship, yet Novices and A/Os can also show in the open division at the same time.

SSLS offers around 100 classes (that's 200 chances to qualify for NAN!) in the halter division, and we also offer "fun" classes such as OF Plastic and OF China collector's classes, Other Animal, and the ever-popular Anything Goes. We have also had fun classes tailor-made to the judges we invited, such as a Stablemate Challenge for Lesli Kathman to judge and a "PAS Challenge" for PAS-fan Teresa Ward to drool over!

SSLS imports judges from all over the US to add some variety from year-to-year in the judging. Past imported judges include Ardith Carlton, Kate Cabot, Stephani Robson, and Carol Williams. We are thankful too to our Southeastern/local judges Anthea Smith, Gretchen Waldo, Teresa Ward, Lesli Kathman, and Lori Daniels.

There is a large China/Resin showing contingent in the Southeast, and SSLS has an area of the show hall designated for those known to show up with the fragiles. We call it

"china avenue"!

Throughout the day, as they are judging classes, judges may drop black flat ribbons next to horses they happen to like for whatever reason. These horses need not be conformationally correct or superior, just models that catch the judges eye. At the end of the day, each judge calls back the "black ribbon" horses and a "Judges's Choice" is named in each division.

SSLS also has a BBQ on the Friday night before the show where an auction is held to benefit a local humane society. Proceeds from this auction always exceed \$500 and help the "poor kitties and puppies" find new homes.

We hope to see you at SSLS sometime!

Grand National Live  
Traci Skelton  
Eagle Nest Tack Shop  
1327 Redwood Ave.  
Grants Pass, OR 97527

### **Gold Country Model Horse Show**

Janet Davis  
610 Grider Dr.  
Roseville, CA 95678



*Above: Gold Country MHS 1997, two of our teen showers and their models. Left, Emily Davis; right, Emilee Anderson.*

Can a live show have a low profile yet have a turn-out of over 40 participants, many of the best models in the country, some of the best known vendors in our hobby, several showers who compete nationally, new faces, local friends, three divisions, halter, performance, collector classes, orderly yet pleasant, a lovely double banquet room, lots of door prizes, Hagen-Renaker champ and reserve awards, a day of fun, and all for nearly half the cost of more publicized shows?? YES! And we have done it!

At this annual March show here in Northern California we have made it our goal to hold a show reflecting the desires of our showers. It must be fun, fair, friendly to newcomers, orderly, good variety of classes with high quality competition. We reduce our costs nearly 40% over other shows by awarding satin neck ribbons with tiny medallions to the models. New showers are recruited through novice model competitions, and model swaps held at local toy store Breyer parties. We are very fortunate to have a core of very knowledgeable and talented showers with models of incredible quality, beauty and variety from customs, resins, to those ever-faithful OFs. We invite you to join us if possible. Remember—don't underestimate a show with a low profile!

### Mid-Atlantic Regionals

Betsy Andrews  
1622 Chesapeake Dr.  
Woodland Beach  
Edgewater, MD 21037

The Mid-Atlantic Regionals Horse Show (MAR) was first organized and held in 1981. Throughout its 17 years, it has always been held in Maryland, and is currently held in Edgewater, just outside of Annapolis.

MAR started as a small, one day local live show, with 25 classes and a dozen entrants. This year, there were about 65 participants, plus numerous spectators, friends and family members! Also, over 200 classes were offered over two days.

A wide variety of divisions and classes are offered. In 1997, the show was split between RRH/OS/LE and OF models, with a day of classes for each. Each group had its own Performance Division, plus Halter Divisions for Foals as well as Stablemate/Little Bits. Other Halter Divisions included Repaint/Repaint-Hair; Repaint/Remake/Hair; OS/LE finished by Sculpting Artist; OS/LE finished by Other Artist; OF Breyer; OF H-R; OF Other Mold; and OF Collectibles. Each division has its own Grand and Reserve Champions, and there is an Overall Grandest of the Show awarded each day. MAR is also one of the few shows that offers rosettes to those models which place first or second in a class.

MAR is used as a benefit for Therapeutic Riding in Anne Arundel County/Oakcrest Therapeutic Riding Program. Over the years many noted artists have donated their work



Above, top: 1997 MAR winners from the Repaint/Halter Division (left to right): Susan Rudnicki, Diane Knoth, Kathy Thompson, Karen Bartholomew, Beth Collier, Amy Henry.

Above, bottom: 1997 RRH Games class entries.

to be auctioned off to benefit TRAAC/OCTRP. For the past three years, a "Repaint-Remaker's Challenge" has been held, with models auctioned off and part of the proceeds to benefit TRAAC/OCTRP.

MAR has attracted participants from as far away as Washington State and California, though most entrants are concentrated in the Mid-Atlantic area. MAR has the distinction of being one of only a few live shows that qualified for Breyer Sponsorship when it was being offered (1984-1991). While providing a quality show for the model equine enthusiasts, it has also helped to raise \$5500 for TRAAC/OCTRP.

The Spark Plug Cup  
Ardith Carlton  
PO Box 18083  
Columbus, OH 43218

March Morgan Madness  
Robin Briscoe  
204 Pleasant St.  
Lowell, MA 01851

Almost All Halter Jamboree Benefit  
Sheryl Leisure  
1000 W. Fourth St., #154  
Ontario, CA 91762

### **Hallie Ho Expo VII**

Julie Wilkowski  
1845 Michelbook Lane  
McMinnville, OR 97128



*Hallie Ho Expo 1995... Our first judge, all the way from Texas, Leah Posey-Patton.*

Hallie Ho Expo is held the first Saturday of April in McMinnville, Oregon. The 1997 show was our seventh! We have an average of 30 exhibitors. Halter classes are offered in open OF plastic, open OF china/resin, open CM, and Youth divisions. A performance division may be added in 1998.

A special part of Hallie Ho Expo is the "Almost Anything Goes". The only rule for this always creative, sometimes wacky competition is... Nothing Alive!

Hallie Ho Expo Champions have included: Misty Grey, o/b Linnea Cameron; River Bubbles, o/b Dee Gwilt; Moonwind, o/b Denise Hauck; ALC Torque, o/b Chris Billett; Sterling Debonaire, o/b Traci Durrell-Khalife; Virtual Reality, o/b Traci Durrell-Khalife; Doc Grady, o/b Laura Pervier; Mr Midnight, o/b Robyn Grady; MC's El Campeador, o/b Melinda Compton; The Round Table, o/b Brenda Harris; Ink Blot, o/b Daphne Macpherson; Roxanna, o/b Melissa Clegg; TollHouse, o/b Daphne Macpherson; Midnight Oil, o/b Cheryl Baird; Newly Minted, o/b Lynn Hiersche; McShane, o/b Carolyn McRae; Chinook's Personal Choice, o/b Daphne Macpherson; Wild Idol, o/b Liz McMaster...

Join us in the great Pacific Northwest next year!

Rocky Mountain Model Horse Expo  
Karen Gerhardt  
555 Utica Ave.  
Boulder, CO 80304

Spring Blast Show  
John Mangano  
Hi-Way Hobby House  
806 Route 17  
Ramsey, NJ 07746

Kalamazoo Valley Live  
Barb Ness  
1920 S. Westnedge, Apt. 2  
Kalamazoo, MI 49008

New England Spring Expo  
Kate Cabot  
206 Middle Rd.  
Byfield, MA 01922

Spring Fever Live  
Melissa Clegg  
35159 Sykes Rd.  
St Helens, OR 97051

Arizona Live  
Teresa Northcutt  
3725 W Harmont Dr.  
Phoenix, AZ 85051

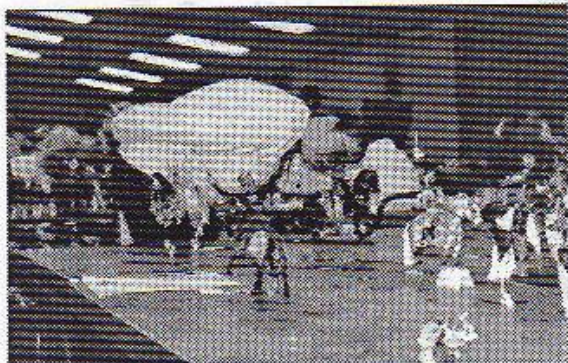
North Texas Live '97  
Kimberly Ann Wandrey  
1400 Park Blvd. #2701  
Grapevine, TX 76051

### **Greater Pittsburgh Model Horse Show**

Kelly Engelsiepen  
94 Parker St.  
Pittsburgh, PA 15223

The Greater Pittsburgh Model Horse Show is held annually in April each year. Our new location is in the ballroom of the Sewickley Country Inn, in Sewickley, PA (just north of Pittsburgh). The hotel offers discount room rates to those who register with us, and the ballroom is large and well-lighted!

We average about 45+ entries each year, and had over 60 in 1997. GPMHS is a 2-day show featuring divisions for: Performance, Novice, OF Plastic Halter, OF Other Make Halter, CM Halter, Beginner (12 and under), Resin/OS Halter, Breyer Collector Halter, OF SM/LB, CM SM/LB, and Foals. We offer top quality



*GPMHS 1997, Costume class being judged by Lucy Kusluch.*

awards, with trophies for all Grand and Reserve Grand Champions.

On the Friday evening before the show, we hold an exhibitor's party in the hotel, complete with food and beverages. It gives everybody the chance to meet and mingle before a hectic day of showing. We also hold an auction on Saturday morning, featuring models, tack, and props.

In 1998, GPMHS will be held on April 18-19. Show packets will be available in early fall for a LSASE (2 stamps, please).

#### **Steel City First Live Show**

Michelle Irwin Dye  
208 Main Ave. SW  
Cullman, AL 35055

#### **Model Horse Mecca**

The Tack Connection/Terri Dennis  
RR #3, RT. 22  
Patterson, NY 12563

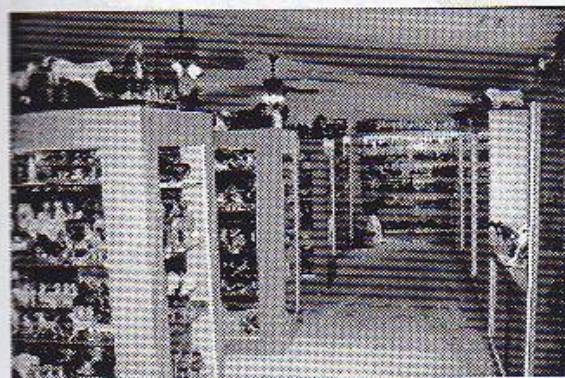
#### **King of Hearts Spring Classic**

Sunda Satow  
Hobbycraft  
3105 W. 6th St.  
Grants Pass, OR 97526

#### **Biggest Little Model Horse Show**

Karen Grimm/BHR  
1024 Nobles Ct.  
Minden, NV 89423

The 1997 inaugural "Biggest Little Model Horse Show" in Reno, Nevada was held at the lush Atlantis Resort Hotel & Casino in their Grand Ballroom. Plenty of table space was provided to showers and vendors alike. Entrants came from Colorado, Arizona, Idaho, Utah, California and Nevada. For this



*Above, top: The Atlantis Ballroom, before the show gets underway!*

*Bottom: The BHR Collection Open House. Over 6,000 model horses of all types on display!*

first-time event, a very simple classlist was chosen, which drew many old time collectors who had not live shown in years!

Awards consisted of horsehead plaques and rosettes to all first place winners, ribbons through 10th, and Grand Champions in several type divisions. Main judges were Karen Grimm, Heather Wells and Lani Keller, bringing a wealth of collector experience to the judging ring. A sculpting class was held at the hotel and taught by Sue Sifton, who also demonstrated sculpting during the model show.

The Black Horse Ranch open house was held Saturday, where visitors were treated to BBQ ribs and chicken and good times. New foals frolicked and were played with by the guests, and stallions were on display all day. The largest private collection of model horses, owned by Karen Grimm, was debuted in the new model horse wing at BHR.

The 1998 event's date is yet to be determined, but early May is most likely. An expanded show classlist will be introduced, along with several other innovative collector and model shower events. Come visit the northern Sierra mountains and have a fun-filled, model horse show experience!

Model Horse Mecca  
Terri Dennis/The Tack Connection  
RR #3, RT. 22  
Patterson, NY 12563

### **Northwest Congress**

Daphne Macpherson  
5310-136th PL SW  
Edmonds, WA 98026

The 1997 Northwest Congress, held May 2, 3 & 4, 1997, drew over 50 competitors from WA, OR, CA and ID. The show ran over two days; the Open Halter classes in Original Finish and China/Resin as well as the Beginner OF/Amateur Custom Performance and Open Custom Performance, were held on Saturday, May 2, while the Beginner, Amateur Custom, and Open Custom Halter and Open OF/China Performance competed on Sunday, May 3. Although the entries were lower than past years, the always-popular Collectors Classes were tough to judge, as well!

Friday featured a Vendor's Day, with offerings ranging from used Breyers to custom models and newly-released resins, and even sterling silver jewelry. Vendor's Day also offers exhibitors a chance to meet and get acquainted without the pressure of trying to get into all their classes on time. Several major vendors were also in attendance during the show Saturday and Sunday, including Cascade Models, DaBar Resins and Resinique Productions (resin casting company from Seattle).

Saturday night was the annual NWC Auction, featuring custom models and resins as well as original finish models and tack. One of the hottest items offered was a one-of-a-kind Peter Stone Western Pleasure Horse in BLACK Pinto (the regular run is chestnut; this was done as a test for the pattern). Another popular lot was a Cascade Models produced Queen's Treasure resin Arabian mare, painted by Daphne R. Macpherson (Aspen Leaf Creations). The auction is an important and fun part of Northwest Congress, bringing people together in a friendly atmosphere while raising the much-needed funds to run the show.

The competition in all divisions was tough, as evidenced by judges Bonnie Robb (Open Custom Halter), Cheryl Baird (Open China/Resin Halter) and Chris Jolly (Amateur Custom Halter), who had a hard time placing their classes!



*NWC 1997, Above, top: Open China/Resin Halter Ch/Res; both owned by Laura Pervier  
Bottom: Beginner OF/Amateur Custom Perf Ch/Res; Tasha Holt & Cece Osborn.*

Plans are already underway for the 1998 Northwest Congress, scheduled for May 15, 16 & 17, 1998. It will be held in Renton WA, in the same hall as previous years' shows. Included on the agenda for 1998 are two full days of showing, the Auction, Friday Vendor's Day AND Seminars! Send LSASE (#10 business size) with extra stamps for entry information.

The Great Lakes Congress 1997  
Kerri Gehrman  
1018 Manchester Course  
Geneva, IL 61034

### **STMHC 3rd Annual Live Show**

Melinda Mills  
14002 Greenjay  
San Antonio, TX 78217

Greetings from South Texas! Our club was founded in 1993 by Shannon Stockton. In 1995, we decided to hold our first open show. We got a much bigger turnout than we



*A photo from the very first STMHC Live show, in 1995. Left to right: Melissa Crandall, Melinda Mills, Shelly Hansen, Emily & Meredith McFaddon, Shannon Stockton. These founding members are still currently active in the club.*

anticipated so we had to put plywood over chairs for tables and we couldn't figure out how to turn on the a.c. until halfway through the show! Boy, have we come a long way since then! Next year, 1998, we will host our 4th annual live show.

This show is held in Schertz, TX, which is a suburb outside of San Antonio. The hall used to be a dance hall but is now used for weddings and so forth. It is also a restaurant which offers a home-cooked lunch for \$5 a plate so show attendees. The main thing we strive for at our show is a fun and friendly atmosphere. We offer a two-day show with two divisions in performance, and three divisions in halter. Our classlist is pretty standard. We also have a collector's class and misc. "fun" classes. Our usual attendance is 20-30 showers.

Our prizes are pretty unique. We give rosettes to our Grand and Reserve Grand champions as well as new in the box models or a trophy. Our rosettes are always purple and white which are our club colors.

Retama Park is very close to our show hall. This is a horse racing track which has Thoroughbred and Quarter Horse racing. Sea World and Six Flags Fiesta Texas are also close by as well as the San Antonio River Walk.

Our 1998 show will be held in May, date to be announced. If anyone is interested in our club, contact our President, Melissa Crandall, 5830 Oak Run, San Antonio, TX, 78247. Hope to see you in South Texas next year!

Lake Farm Park Model Horse Show  
Kelly Engelsiepen & John Venin  
94 Parker St.  
Pittsburgh, PA 15223

North Idaho Live  
Shannon Granger  
413 E. First St.  
Moscow, ID 83843

Model Horse Fest Live Show  
Lillian Ryan-Shupe  
PO Box 103  
Flemington, NJ 18822

Trading Times Live  
Lynn A. Luther  
314 N. Redbud Trail  
Buchanan, MI 49107

### **Tejas Live**

Daralyn Wallace  
1311 Garden Lane  
Bryan, TX 77802-1934

TEJAS LIVE 97 was held on June 7-8, 1997 on the Texas A&M Campus. Over 30 entrants competed in the following divisions: OF Plastic Halter, OF China/Resin Halter, CM Halter, OF Performance, CM Performance, and a Youth Division.

One of the highlights of the show was Shannon Stockton's OF Performance other western entry featuring "Jack" of the Jack In The Box commercials. Jack said, "I asked these cowboys to try my burgers because cowboys don't lie." Entrants and judges alike took a break to watch the Belmont and Silver Charm's bid for the Triple Crown on a TV across the hall on Saturday afternoon. Saturday evening, most of the entrants and the show staff descended on Imperial Restaurant in College Station for Chinese food and the celebration of Sue Stewart's birthday. Sue was presented with a silver pin replica of a Breyer stablemate Arab mare by the show staff and a song and a cake from the restaurant.

### **Heart of the Finger Lakes Live**

Leslie Phelps  
6 Abbott Ln.  
Ithaca, NY 14850

Ithaca NY in June. 1997 saw the third incarnation of Heart of the Finger Lakes Live, a

show held and run by members of CEFOMAC. CEFOMAC (which stands for Collectors, Enthusiasts and Fanciers Of Models At Cornell) is the only known University sanctioned model horse club. This means we get to use buildings on the Cornell Campus for our model horse activities pretty much at will.

The show features separate OF and CM halter divisions and a combined performance division. A separate show for Junior and Novice showers is also available. Entrants come from all over NY and New England and have come from as far away as Chicago and Canada. The show has pulled between 15-20 entries every year, but competition is pretty stiff despite the seemingly small size. Judges have included Kathy Wells, Steph Robson, Jackie Arns, Rick Clark, Kate Cabot, and Diane Kennedy.

We also have a raffle table with excellent donations from local hobbyists. Donations in the past have included props from Wilshire Miniatures, The Fence Post, gift certificates from local merchants who sell Breyers, OF Breyers, CM horses by Rick Clark, Steph Robson, and Jean Barrett. In 1997 we had our first auction horse... a DaBar resin "Galatea" painted by Tom Bainbridge (THANK YOU DABAR AND TOM!!) which went to her new owner as the bargain of the century (there are advantages to small shows!!).

### **Northwest Expo**

Traci Durrell-Khalife  
1666 SW Squaw Creek Place  
Corvallis, OR 97333

NW Expo packs a lot of fun and classes into a one-day show. It is held in mid-June in the spacious Benton County Fairgrounds Auditorium in Corvallis, Oregon. It's in the heart of Oregon's lush Willamette Valley, just 10 miles from the I-5 Freeway. Just an hour west to the coast, less than two hours east to the Cascade Mountains and then Oregon's high desert, or a couple hours north to Portland, it's a great tourist destination!

NW Expo has just completed its fourteenth year (formerly called Oregon Live), and its tenth year in Corvallis with Traci Durrell-Khalife as show hostess. The show typically attracts about 35 entrants.

NW Expo offers both halter and performance in Youth/Novice; open OF and open CM divisions. There are also four collection



*Top: NW Expo 1997: Beth Martensen judges some of the Youth/Novice Costume entries.*

*Bottom: Marie Field judged the Equine Art Gallery, at NW Expo 1994.*

classes, a scene class and some fun classes like fantasy/mascot, doll, cattle, decorator and woodgrain. Another special feature is the Equine Art Gallery for drawings, paintings and photographic enlargements of horses or related subjects. We try to offer something for every interest. There are more than 90 classes in all and the show usually finishes by 5pm!

Of course there are always door prizes and raffles, as well as vendors of new and used models and hobby items. Flats are awarded to tenth in each class. Champions and Reserves receive rosettes, and Champions also receive a mug, glass or silver tray. In addition, American Long Ears Society sponsors Pursuit of Excellence awards to any long ear winning champ or reserve against a field of horses.

Do come join the fun in Oregon at NW Expo in 1998!

Indy-Con 1997

Pat Reed

237 North 20th Ave.

Beech Grove, IN 46107-1019

Almost All Halter Jamboree Benefit  
Sheryl Leisure  
1000 W Fourth St. #154  
Ontario, CA 91762

### **NEMHC Summer Live Show**

Nancy Timm  
965-6 Main St.  
Holden, MA 01520

This annual live show is usually held in Holden, Massachusetts, at the CRA (Chaffins Recreatoinal) Hall on Main Street. It is usually held on a Saturday in June. We have anywhere from 30 to 40 entrants, mostly from New England, but also from New York, New Jersey, Pennsylvania, and we even had a shower from Washington State!

We offer a Novice division, open OF, open CM, and new this year, a division just for the minis! Occasionally we have had clinics held by various showers. The clinic on performance showing was especially popular.

We promote our club at the show. The New England Model Horse Club is geared to all aspects of the hobby: live showing, photo showing, racing, remaking, and just collecting. We have a bi-monthly newsletter that keeps all the members abreast of what's going on in the hobby, upcoming shows and events, and other interesting information. It's fun and informative. Send a SASE for more information on the club or the show!

Big Sky Live  
Lynn Weber  
4611A Ironwood St.  
Great Falls, MT 59405-6647

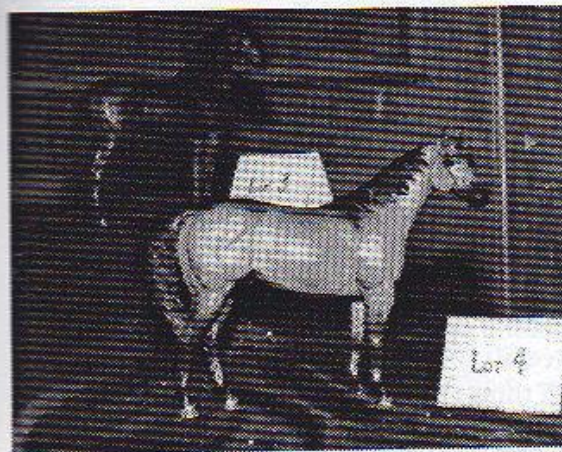
Great Lakes Model Horse Association Expo  
Cheryl Monroe  
4616 N Ainger Road  
Charlotte, MI 48813

Virginia Live Model Horse Show  
Dawn Deale  
1701 Mountain Pine Terrace  
Richmond, VA 23235

### **Western Regional Congress**

Bonnie Robb  
712 W. Devirian Place  
Altadena, CA 91001

WRC just celebrated its twelfth "official" anniversary in June! We are pretty sure that



*Above, top: WRC 1991, the very first Legend Sale, featured unique pieces like this specially-customized Rio Rondo QHS-1, by Carol Williams.*

*Bottom: Showholders Bonnie Robb (left), and Darian Buckles, toasting another WRC job-well-done, in 1996.*

WRC was held in a smaller form prior to that, but we don't have official stats. Twelve years ago, Laurie Jensen took up the reins and held it for two very successful years in San Clemente, CA. Her third year, in Oakland, was 1990, and it was there that family constraints made it necessary for her to give the show to Darian Buckles and Bonnie Robb. Counting our work in 1990, we have held the show now for 8 years.

We moved the show to Las Vegas and have held it there ever since. Vegas offered a central location and a fun place for the family. Our permanent home has been the Showboat Hotel and Casino. Our most entertaining feature has been the "Legend Sale", the mother of all live show benefit auctions. It's been ritzy, glamorous, exciting, hilarious, but mostly a gathering of talents and art that was unrivaled (until the NAN auction came to be)!

WRC's main claim to fame would be the series of natural disasters that have followed it! From the fury of mother nature to the

---

threat of plague, we seem to have had "interesting" luck! Most memorable is the earthquake of 1992, which was actually centered in Big Bear/Landers, CA, but really shook the rafters in Vegas. Many of our out-of-state guests had never experienced an earthquake before, and to say they were discomfited would be mild! Then, in 1995, an insidious little chicken pox bug invited itself to the show, and many entrants found themselves coming up Appaloosa in the following weeks!

All things considered, however, WRC is known for a fun-loving, laid-back show, yet highly competitive event. The future of WRC is currently an issue, due to the declining numbers of entrants who wish to travel outside their local region. If we do decide to hold it again next summer, you can be sure we will advertise it!

Central Colorado Expo  
Frances Lowe  
12440 N Piney Lake Rd.  
Parker, CO 80134

Open/Novice Show For Hospice  
Karen Bartholomew  
2068 Livingston Rd.  
Jamestown, PA 16134-8814

## **1997-98 Upcoming Member Shows**

### **Much Ado About Nothing Live Show**

August 16, 1997  
Diane Knoth  
10486 Stonington Lane  
Manassas, VA 20109

*"...each man to what sport and revels his  
addiction leads him..." -Othello*

The "Much Ado About Nothing" Model Horse Show is a one-day event held in Manassas, a town in Northern Virginia, at the local Elks Lodge. Last year was its debut, and quite a debut it turned out to be, with 48 showers attending. A good time was had by all!

So, you may ask, what's with the name, "Much Ado About Nothing"? Well, I chose this title of a Shakespeare play, first, because of my fondness for the stage and of the Bard's work, but secondly, because I feel it

says what all hobbyists are "guilty" of, making a lot of fuss over what others often consider merely a trifle, so with that in mind, I say come help us celebrate and make much ado about nothing!

This year we offer the same classlist, which includes six separate divisions with their own grands/reserves awarded. Many championship titles are awarded as well; in fact, the Customized and OF Plastic divisions both have 13 champ/reserve titles each, so there's lots of opportunities to win those lovely rosettes. Other divisions are Performance, Foals, OF China/Other, and Novice.

One thing about "Much Ado" which attracts entrants is the quality of our prizes. Last year grands and reserve grands received beautiful silver and bronze jewelry, and this year we'll be handing out Donna Chaney and DaBar mini resins in five divisions. And to keep from going broke after buying all these awards, we have both a raffle and an auction to help cover costs, and both were very popular last year. Besides all this the first fifty entrants this year will receive a nifty "Much Ado" tote bag!

After the show, several letters arrived and here are a few comments:

"The competition was absolutely stupendous. So many exhibitors brought so many pieces (especially chinas) that you rarely ever see at all, much less in one room together."

"The awards were great, the hall was fantastic and everything was just perfect. I have to say it was one of the best live shows I have ever attended."

"I thought the show was very well organized and well run. It was also very refreshing to go to a show that was fair and friendly!"

This year's date is August 16th, and it's not too late to enter!

### **Salt City Sizzler**

August 16, 1997  
Elaine Boardway  
60 S. Hamilton St.  
Jordan, NY 13080-9503

This is a one-day show, limited to 15 entrants, with 34 classes, a couple fun classes, a Breyer vendor, door prizes, and a small auction. It is held in a very nice church hall in Fayetteville, NY, (near Syracuse, the "Salt City").

This is my second open show, and every year I make improvements. This year I have



Laurie Lape shot this photo of Danielle Plourde at the 1996 Salt City Sizzler show, in hopes of winning the Hodges Badge Company photo contest! It didn't work out for them, but here they are in the NAN Program, anyway!

added a performance division and custom printed ribbons. Halter classes are divided by RR and OF. I usually have enough door prizes to give a second-chance drawing for spectators. My Breyer vendor plans to offer "Desperado" and I already have a very nice remake consigned to our auction.

Being a small show, I avoid a couple of problems that many bigger shows can face—namely, overcrowding and late hours. Last year's show was packed up by 4pm! By staying small, I am able to handle the duties of show secretary, plus field questions from visitors and talk to my guests. Novice showers do not feel overwhelmed and might even take home a few ribbons. Last year's show got rave reviews from everyone attending.

Wild Oats Live  
August 16, 1997  
Emily Weiss  
2485 Rio Grande Cir.  
Naperville, IL 60565

### **Jamboree Summer Challenge**

August 22-23, 1997  
Sheryl Leisure  
1000 W Fourth St., #154  
Ontario, CA 91762



Jamboree Summer Challenge 1996: Adalee Velasquez, winner of the CM Championship.

See the Jamboree ad in the centerfold of this program, for the complete details on Jamboree Summer Challenge this year!

Morrison's Cove Live Model Horse Show  
August 23, 1997  
Dolores Smith  
RD 1, Box 496  
Martinsburg, PA 16662

### **Mid-Ark Model Horse Expo**

September 6, 1997  
Tracy Rogalla  
87 Orchard Rd.  
Greenbrier, AR 72058

Located at the Quitman, Arkansas, city hall, a one-day show attracting around 20 entrants.

We offer novice classes, OF/CM halter and performance. We are the only live show in Arkansas, and this will be our eleventh year! The most memorable show was the year we had just *one* entry and during the show a girl came to see what was going on and we talked her into showing in halter the two horses she had just bought!

### **Gem State Classic Live Show**

September 6-7, 1997  
Cari Zisk  
800 Cherry Lane  
Emmett, ID 83617

The Gem State Classic Live show will be held in Boise, Idaho on September 6-7, 1997. The Classic is a new NAMHSA member show and is already receiving a lot of interest! Boise is in an ideal location to attract showers from Idaho, Oregon, Washington, Nevada, California, Wyoming, Montana and Canada!

Activities will kick off on Friday evening at the host hotel with a "Sales Party", dinner and a silent auction to benefit the show. Show activities will be held Saturday and Sunday. The Classic offers five divisions (including novice) as well as several fun classes! There will be several door prizes and we have some very nice raffle items as well!

The auction will offer consignments from Lee Francis, Michelle Belise-Locke, Jeannine Hartrampf, Jan Stevens, Karen Gerhardt, Peri Riggins, Colleen Hartshorn and a Lynn Fraley/Thomas Bainbridge collaboration to name a few! The auction is being held before the show so that new owners can show their acquisitions! Proxy bidding will be allowed

---

and you can receive an auction booklet by writing the showholder.

Boise offers a lot of activities for the rest of the family as well, the show hall is just up the hill from several parks, the zoo, art gallery, historical museum and downtown Boise. Other activities going on the same week-end include Arts in the Park - an annual craft fair with stunning items available from local and regional artists and just 30 minutes away in Nampa, Idaho, there will be a two day registered Paint horse show - sure to provide a lot of color and excitement!

Show packets are ready now - just send a LSASE!

Model Horse Expo 1997  
September 20, 1997  
Laura J. Rock-Smith  
10 Holmes Ct.  
Sayville, NY 11782-2408

Superstition Fall Classic  
September 27, 1997  
Annette Arnold  
971 E. Elgin St.  
Chandler, AZ 85225-6413

T.O.T.S. Live!  
September 27, 1997  
Barbara Stine  
Toys On The Square  
12 Briarcrest Square  
Hershey, PA 17033

---

### **Cornhusker Classic Live Show**

September 27-28, 1997  
Carra Reinmiller  
5220 S. 40th St. #62  
Lincoln, NE 68516

The Cornhusker Classic Live is a benefit for Special Therapeutic Equestrian Programs (STEP) in Lincoln, Nebraska. Carra Reinmiller, the show organizer, has been involved with STEP since 1992, and has seen the program struggle through vital equipment shortages.

CCLS's proceeds will be used to purchase equipment for the program, such as a wheelchair ramp and several types of saddles that are badly needed. STEP is grateful for and overwhelmed by the support they have received from the model horse community!

CCLS offers two full days of showing, with a complete OF halter and performance show

---

on Saturday, and complete CM halter and performance show on Sunday. Write for your entry packet today!

Orphan Wildlife Center Fall Classic  
October 4, 1997  
Deanna Heffner  
328 U.S. 42  
Polk, OH 44866

Happy Trails Collectables Model Horse Show  
October 11, 1997  
Merle (Sissie) Merrill  
2640 Dunmore Cir.  
O'Fallon, MO 63366

BayouLand Live 1997  
November 8-9, 1997  
Kim David  
1531 Janet Dr.  
Lake Charles, LA 70605

Reeve-Irvine Benefit Show  
November 15, 1997  
Kim Henderson  
209 Trails End Ct.  
Raleigh, NC 27614

Autumn Classic 1997  
November 15-16, 1997  
Gail Berg  
PO Box 390010  
Mountain View, CA 94039

Central Florida Equestrian Classic  
November 29, 1997  
Liz Wettingfeld  
4140 SW 159th Ct.  
Ocala, FL 34481

Windrush Live  
TBA, Fall 1997  
Kate Cabot  
206 Middle Rd.  
Byfield, MA 01922

Northwest Congress  
May 15-17, 1998  
Daphne R. Macpherson  
5310 136th Pl. SW  
Edmonds, WA 98026

Gold Country Model Horse Show  
March 7, 1998  
Kirsten Dahl  
1724 Brown Ave.  
Woodland, CA 95695

Sunshine State Live Show  
TBD, Spring 1998  
Paula Hecker  
2053 Dyrehaven Dr.  
Tallahassee, FL 32311



For further information on NAMHSA, the NAN, an application for your live show to become a NAMHSA member, to volunteer your services or become actively involved in NAMHSA, or anything else concerning NAMHSA, contact:

Karen Gerhardt  
NAMHSA Secretary  
555 Utica Ave.  
Boulder CO 80304-0776  
Phone/Fax: 303/447-2675  
(Fax available weekdays ONLY, 9am-5pm,  
mountain time)  
email: kyg@ecentral.com

The  
North American Nationals  
1997  
is pleased and proud  
to present

the

Wednesday  
Original Finish Show

with  
sponsorship from



Thank you  
Breyer/Reeves,  
for your generous support  
of  
NAMHSA, the NAN  
and the model horse  
showing hobby!

---

*The  
North American Nationals  
1997  
is pleased and proud  
to present*

*the*

*Wednesday  
Original Finish Show*

*with  
sponsorship from*



*Thank you  
Breyer/Reeves,  
for your generous support  
of  
NAMHSA, the NAN  
and the model horse  
showing hobby!*

---